

## SOCKS & SLEEVES

### KNEE-HIGH SOCKS & CALF SLEEVES

CALF CIRCUMFERENCE	IN INCH	9.5-12	12.5-15	15.5-17.5	18-20
	IN CM	25-31	32-38	39-44	45-50
WOMEN		II	III	IV	-
MEN		-	III	IV	V



Measure your calf circumference at the widest point.

### SHORT SOCKS, MID CUT SOCKS & LOW CUT SOCKS

SHOE SIZE	EUR	34-37	37-40	40-43	-
	UK	2.5-4.5	4.5-6.5	6.5-9	-
	US	4.5-6.5	6.5-8.5	8.5-11	-
ANKLE CIRCUMFERENCE	IN INCH	7-8.25	8-9.25	9-10.25	-
	IN CM	18-21	20-23.5	22.5-26	-
WOMEN		II	III	IV	-
SHOE SIZE	EUR	-	39-43	43-46	46-50
	UK	-	5.5-8.5	8.5-11	11-14
	US	-	6.5-9.5	9.5-12	12-15
ANKLE CIRCUMFERENCE	IN INCH	-	8-9.25	9-10.25	10-11.25
	IN CM	-	20-23.5	22.5-26	25-28.5
MEN		-	III	IV	V



Measure your ankle circumference at the narrowest point.

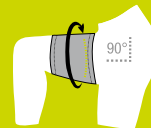
### NO SHOW SOCKS

SHOE SIZE	34-37	37-40	40-43	-
WOMEN	II	III	IV	-
SHOE SIZE	-	39-43	43-46	46-50
MEN	-	III	IV	V



### QUAD SLEEVES

THIGH CIRCUMFERENCE	IN INCH	16-18	18.5-20.5	21-22.5	23-25	25.5-28
	IN CM	40-46	47-52	53-57	58-63	64-70
UNISEX		I	II	III	IV	V



Measure your mid-thigh circumference.

### FOREARM SLEEVES

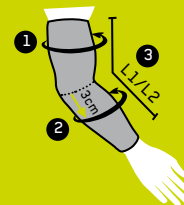
FOREARM CIRCUMFERENCE	IN INCH	9-10.25	10.25-11.5	11.5-12.25
	IN CM	23-26	26-29	29-31
UNISEX		II	III	IV



Measure your forearm circumference at the widest point, approx. 3 cm below the elbow.

### ARM SLEEVES

BICEPS CIRCUMFERENCE	IN INCH	10-11.5	11.5-12.5	12.5-14.5
	IN CM	25-29	29-32	32-36
FOREARM CIRCUMFERENCE	IN INCH	9-10.25	10.25-11.5	11.5-12.25
	IN CM	23-26	26-29	29-31
UNISEX LENGTH - L1: 43-51 cm / 17-20 inch		II	III	-
UNISEX LENGTH - L2: 48-56 cm / 19-22 inch		-	III	IV



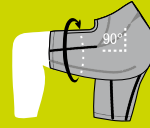
1. Measure your upper arm circumference at the widest point on your biceps.

2. Measure your forearm circumference at the widest point, approx. 3 cm below the elbow.

3. Measure the length from your wrist to your armpit (on the inside of your arm).

## RUN SHORTS & TIGHTS

ESTIMATED SIZE		XS	S	M	L	XL	XXL
THIGH CIRCUMFERENCE	IN INCH	16-18	18-22	20-24	22-26	24-28	24-30
	IN CM	40-45	45-50	50-55	55-60	60-65	65-70
WOMEN		I	II	III	IV	V	-
MEN		-	II	III	IV	V	VI

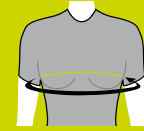


Measure your mid-thigh circumference.

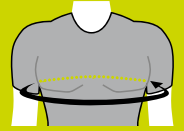
If the measurement is between two sizes, use your normal clothing size as a guide.

## WINGTECH SHIRT

CHEST CIRCUMFERENCE	IN INCH	30.5 - 32.25	32.25 - 34.25	34.25 - 36.25	36.25 - 39	39 - 41.25	-
	IN CM	78 - 82	82 - 87	87 - 93	93 - 99	99 - 105	-
WOMEN		XS	S	M	L	XL	-
CHEST CIRCUMFERENCE	IN INCH	-	37 - 38.5	38.5 - 40	40 - 41.75	41.75 - 43.25	43.25 - 44
	IN CM	-	94 - 98	98 - 102	102 - 106	106 - 110	110 - 114
MEN		-	S	M	L	XL	XXL



WOMEN



MEN

Measure your chest circumference at the widest point of your upper body.

## RECOVERY

### RECOVERY SOCKS

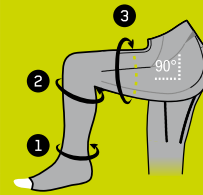
ANKLE CIRCUMFERENCE	IN INCH	7 - 8	8.5 - 9	9.5 - 10	10.5 - 11.5
	IN CM	18 - 20	20.5 - 23	23.5 - 26	26.5 - 29
WOMEN		II	III	IV	-
MEN		-	III	IV	V



Measure your ankle circumference at the narrowest point.

### RECOVERY PRO TIGHTS

ESTIMATED SIZE		XS	S	M	L	XL
ANKLE CIRCUMFERENCE	IN INCH	7 - 8	8 - 8.5	8.5 - 9.5	9.5 - 10.25	-
	IN CM	18 - 20	20 - 22	22 - 24	24 - 26	-
CALF CIRCUMFERENCE	IN INCH	11 - 13.5	11.75 - 14.5	13 - 15.75	13.75 - 17	-
	IN CM	28 - 34	30 - 37	33 - 40	35 - 43	-
MID-THIGH CIRCUMFERENCE	IN INCH	15.5 - 20.5	16.25 - 22	17.25 - 23.5	18.5 - 25.5	-
	IN CM	39 - 52	41 - 56	44 - 60	47 - 65	-
WOMEN		I	II	III	IV	-
ANKLE CIRCUMFERENCE	IN INCH	-	8 - 8.5	8.5 - 9.5	9.5 - 10.25	10.25 - 11
	IN CM	-	20 - 22	22 - 24	24 - 26	26 - 28
CALF CIRCUMFERENCE	IN INCH	-	11.75 - 14.5	13 - 15.75	13.75 - 17	14.5 - 18
	IN CM	-	30 - 37	33 - 40	35 - 43	37 - 46
MID-THIGH CIRCUMFERENCE	IN INCH	-	16.25 - 22	17.25 - 23.5	18.5 - 25.5	19.5 - 27
	IN CM	-	41 - 56	44 - 60	47 - 65	50 - 69
MEN		-	II	III	IV	V



1. Measure your ankle circumference at the narrowest point.

2. Measure your calf circumference at the widest point.

3. Measure your mid-thigh circumference.

# ORTHO

## ORTHO KNEE SLEEVE

THIGH CIRCUMFERENCE	IN INCH	14.5 - 15.75	15.75 - 17	17 - 18	18 - 19.25	19.25 - 20.5	20.5 - 21.75	21.75 - 22.75
	IN CM	37 - 40	40 - 43	43 - 46	46 - 49	49 - 52	52 - 55	55 - 58
CALF CIRCUMFERENCE	IN INCH	9.75 - 11	11 - 12.25	12.25 - 13.5	13.5 - 14.5	14.5 - 15.75	15.75 - 17	17 - 18
	IN CM	25 - 28	28 - 31	31 - 34	34 - 37	37 - 40	40 - 43	43 - 46
UNISEX		I	II	III	IV	V	VI	VII



Measure the circumference 15 cm above and 5 cm below your knee.

## ORTHO ANKLE SLEEVE

ANKLE CIRCUMFERENCE	IN INCH	6.75 - 8	8 - 8.75	8.75 - 9.5	9.5 - 10.25	10.25 - 11	11 - 11.75
	IN CM	17 - 20	20 - 22	22 - 24	24 - 26	26 - 28	28 - 30
UNISEX		I	II	III	IV	V	VI



Measure your ankle circumference at the narrowest point.

## ORTHO PLANTAR FASCIITIS SLEEVES

MID-FOOT CIRCUMFERENCE	IN INCH	> 9	9 - 9.75	9.75 - 10.5	10.5 - 11.5	11.5 - 12.25	12.25 - 13
	IN CM	> 23	23 - 25	25 - 27	27 - 29	29 - 31	31 - 33
ANKLE CIRCUMFERENCE	IN INCH	7 - 8.75	8 - 9.5	8.75 - 10.25	9.5 - 11	10.25 - 11.75	11 - 12.5
	IN CM	18 - 22	20 - 24	22 - 26	24 - 28	26 - 30	28 - 32
UNISEX		I	II	III	IV	V	VI



Measure the circumference of your mid-foot and at the narrowest point of your ankle.

## ORTHO ANKLE & ACHILLES SUPPORT SOCKS

CALF CIRCUMFERENCE	IN INCH	9.5 - 12	12.5 - 15	15.5 - 17.5	18 - 20
	IN CM	25 - 31	32 - 38	39 - 44	45 - 50
WOMEN		II	III	IV	-
MEN		-	III	IV	V



Measure your calf circumference at the widest point.

## ORTHO ANKLE & ACHILLES SUPPORT SHORT SOCKS

ANKLE CIRCUMFERENCE	IN INCH	7 - 8	8.5 - 9	9.5 - 10	10.5 - 11.5
	IN CM	18 - 20	20.5 - 23	23.5 - 26	26.5 - 29
WOMEN		II	III	IV	-
MEN		-	III	IV	V



Measure your ankle circumference at the narrowest point.

CEP offers intelligent sportswear with a one-of-a-kind fit. To ensure that our products fit perfectly and guarantee their optimum effect, the size is determined using a circumference measurement.